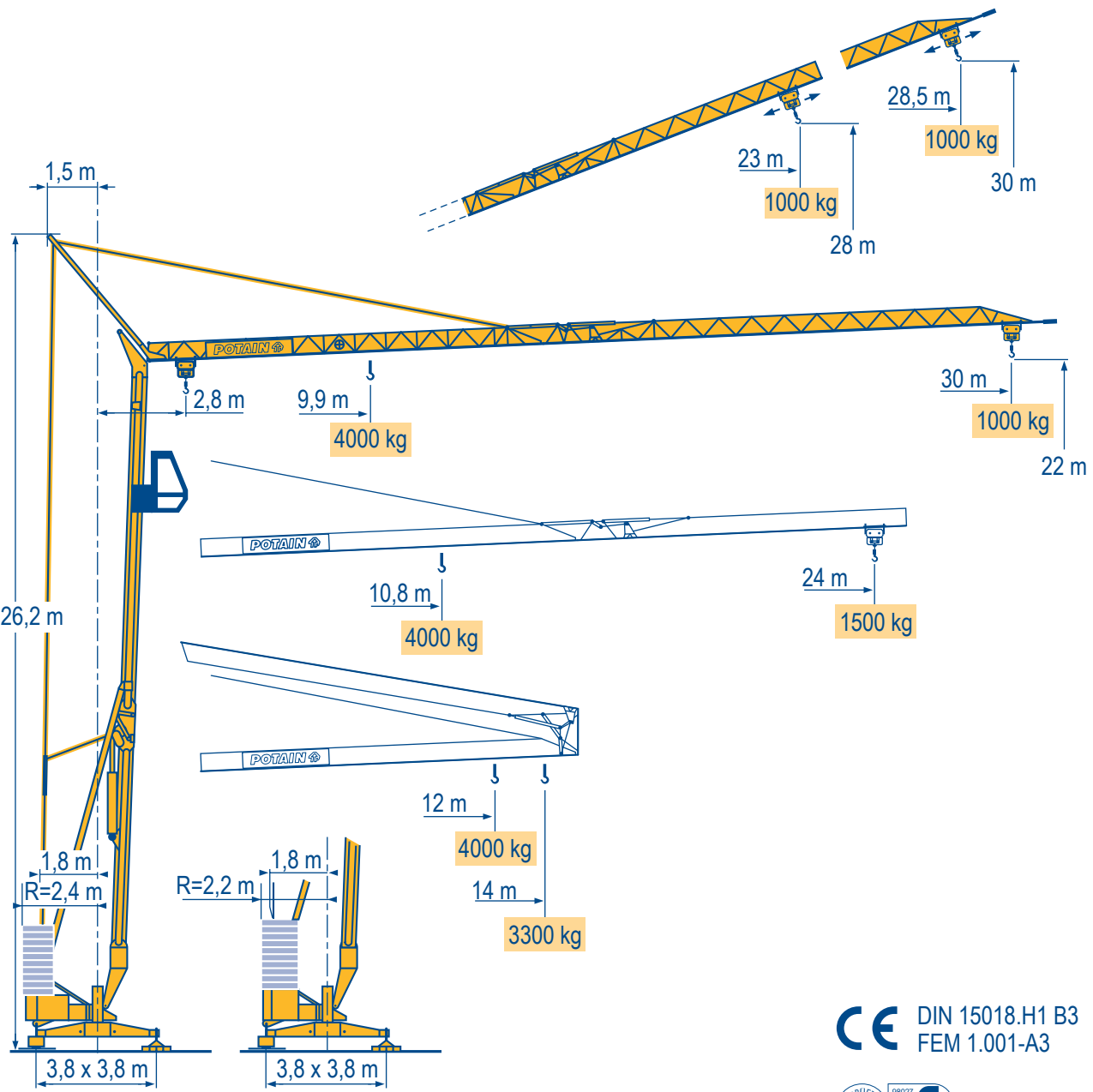


# HD 32 A

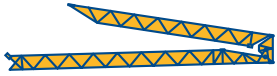


- HD
- HDT
- GTRM
- CITY CRANE
- TOPKIT MD
- MR
- MAXI MD
- MAXI TOPKIT

CE DIN 15018.H1 B3  
FEM 1.001-A3



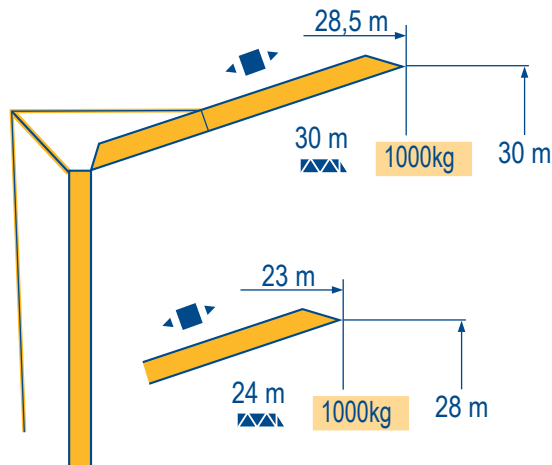
LMO 1



30 m	2,8 ▶	12	13	14	m	9,9	10	11	12	13	14	15	16	17	18	19	20	22	24	26	28	30	m
		4000	3615	3300	kg	4000	3960	3510	3140	2845	2595	2380	2200	2040	1900	1780	1670	1480	1330	1200	1095	1000	kg

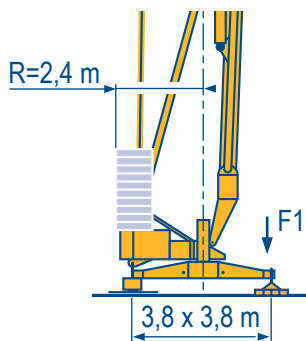
24 m	2,8 ▶	12	13	14	m	10,8	11	12	13	14	15	16	17	18	19	20	22	24	m
		4000	3615	3300	kg	4000	3920	3515	3180	2905	2670	2470	2290	2135	2000	1880	1670	1500	kg

LMO 1

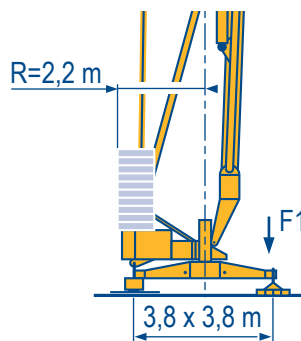


LMO 1

	Chariot distributeur	F	Traversing trolley	GB	Carrellino distributore	I
	Verfahrbare laufkatze	D	Carro distribuidor	E	变幅小车	C



F1 ● 19,7 t ■ 14,4 t  
▲ 11,4 t



F1 ● 20,4 t ■ 15 t  
▲ 11,4 t

LMO 1

● Réactions en service  
■ Réactions hors service  
▲ A vide sans lest ni train de transport avec flèche et hauteur maximum

● Reactions in service  
■ Reactions out of service  
▲ Without load, ballast or transport axes, with maximum jib and maximum height.

● Reazioni in servizio  
■ Reazioni fuori servizio  
▲ A vuoto, senza zavorra ne assali di trasporto con braccio massimo e altezza massima

● Reaktionskräfte in Betrieb  
■ Reaktionskräfte außer Betrieb  
▲ Ohne Last, Ballast und Transportachse, mit Maximalausleger und Maximalhöhe.

● Reacciones en servicio  
■ Reacciones fuera de servicio  
▲ Sin carga, sin lastre, ni tren de transporte, flecha y altura máxima.

● 工作状态下的反应  
■ 非工作状态下的反应  
▲ 空载无压重也无运输车有吊臂和最大高度

Mécanismes  
Antriebe

Mechanisms  
Mecanismos

Meccanismi  
机构

								ch - PS hp	kW	
▲	15 RPC 10	m/min	9	27	54	4,5	13,5	27	15	11
		kg	2000	2000	1000	4000	4000	2000		
◀ ▶	3 D2 V52	m/min	21 - 42						2,7	2
⦿	RCV 20	tr/min U/min rpm	0 → 1						3	2,2
◀ ▶	TVD 121	m/min	25						2 x 1,4	2 x 1

CEI 38		IEC 38	<b>kVA</b>	
400 V (+6% -10%) 50 Hz		20 kVA		84/534 - 87/405

LMO 1

▲ Levage  
◀ ▶ Distribution  
⦿ Orientation  
◀ ▶ Translation  
Conforme aux directives CEE 84/534 et 87/405 sur le niveau acoustique

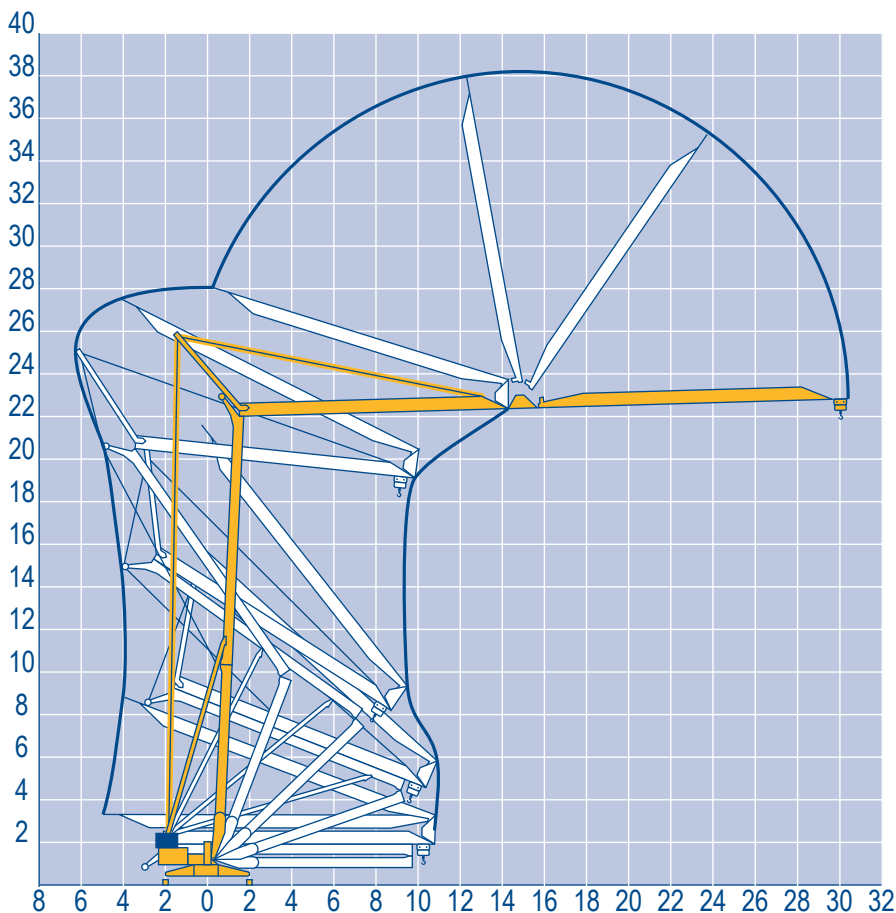
● Hoisting  
◀ ▶ Trolleying  
⦿ Slewing  
◀ ▶ Travelling  
In compliance with the EEC 84/534 and 87/405 Instructions on noise level

● Sollevamento  
◀ ▶ Distribuzione  
⦿ Rotazione  
◀ ▶ Traslazione  
Conforme alle direttive CEE 84/534 e 87/405 sul livello acustico

▲ Heben  
◀ ▶ Katzfahren  
⦿ Schwenken  
◀ ▶ Kranfahren  
Gemäss EWG-Richtlinien 84/534 und 87/405 für den Schall-Leistungspegel

● Elevación  
◀ ▶ Distribución  
⦿ Orientación  
◀ ▶ Traslación  
Conforme con las directivas CEE 84/534 y 87/405 sobre el nivel acustico

● 起升  
◀ ▶ 变幅  
⦿ 回转  
◀ ▶ 行走  
符合 CEE 84/534 - CEE 87/405 声晌度规定

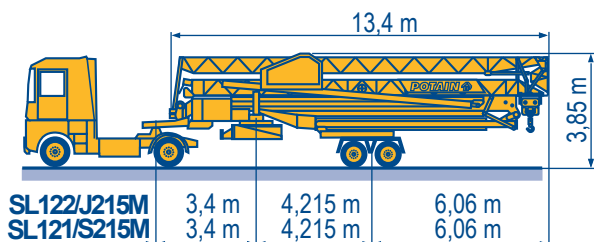


Transport  
Transport

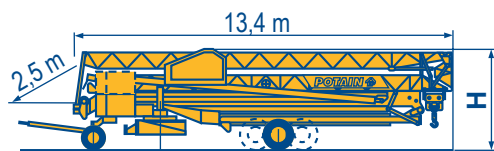
F Transport  
D Transporte

GB Trasporto  
E 运输

I  
C



SL122/J215M	3,4 m	4,215 m	6,06 m
SL121/S215M	3,4 m	4,215 m	6,06 m



	2,4 m	4,1 m	6,17 m	H
DS60/S105	2,4 m	4,1 m	6,17 m	3,30/3,45 m
DS80/J100	2,5 m	4,1 m	6,17 m	3,30/3,45 m
DJ126M/S105	2,5 m	4,1 m	6,17 m	3,45 m
DJ126M/S215M	3,3 m	4,215 m	6,06 m	3,9 m
CJ125M/J215M	3,3 m	4,215 m	6,06 m	3,9 m

SL122/J215M

SL121/S215M

CJ125M/J215M

DJ126M/S215M

DJ126M/S105

DS60/S105

DS80/J100 ○

○ Chantier

F Site

GB Cantiere

I

○ Baustelle

D Obra

E 工地运输

C



18.Rue de Charbonnières, B.P. 173-F  
69132 ECULLY Cedex  
Tél. (33)04.72.20.20.20  
Fax (33)04.72.20.20.00  
<http://www.potain.fr>  
E-mail : mkt@potain.fr

HD32 A

Copyright.Reproduction interdite © POTAIN 1997

**Deutschland**  
POTAIN GmbH Tel : 06.105.704.0  
**Italia**  
POTAIN S.p.A. Tel : 039.65.631  
**China**  
Zhangjiagang POTAIN Tel : 520. 877.1451

